

# OUTSTANDING WOMEN IN OUTER SPACE



Pascal Lee

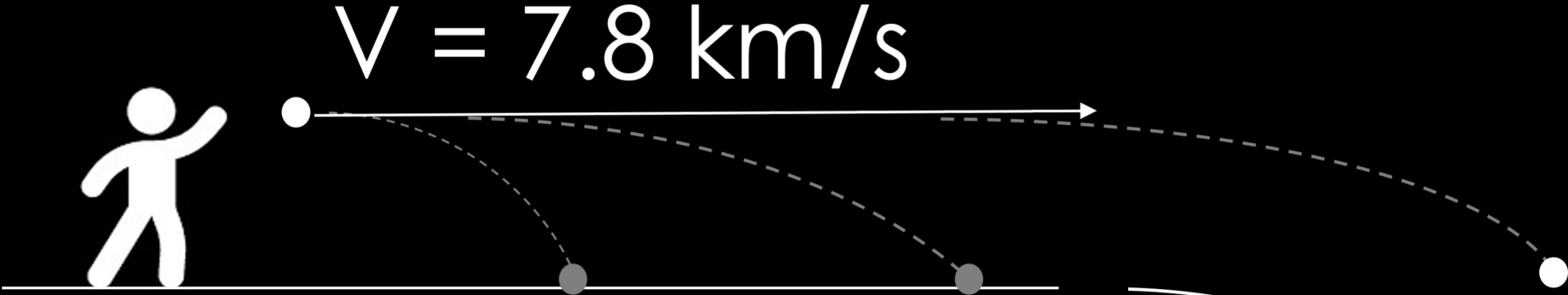
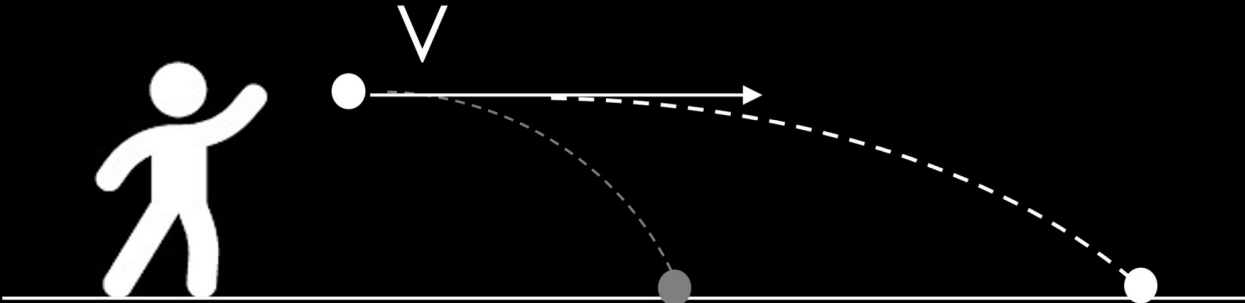
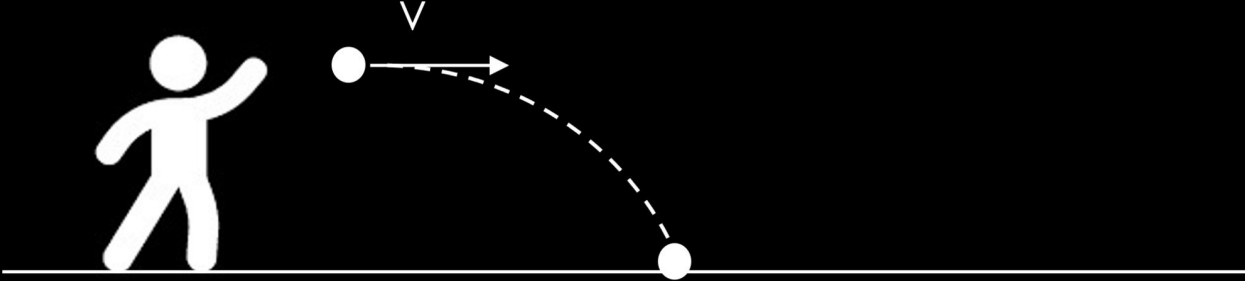
*SETI Institute, Mars Institute, Kepler Space University, NASA Ames Research Center, National Space Society*

California Federation of Business and Professional Women

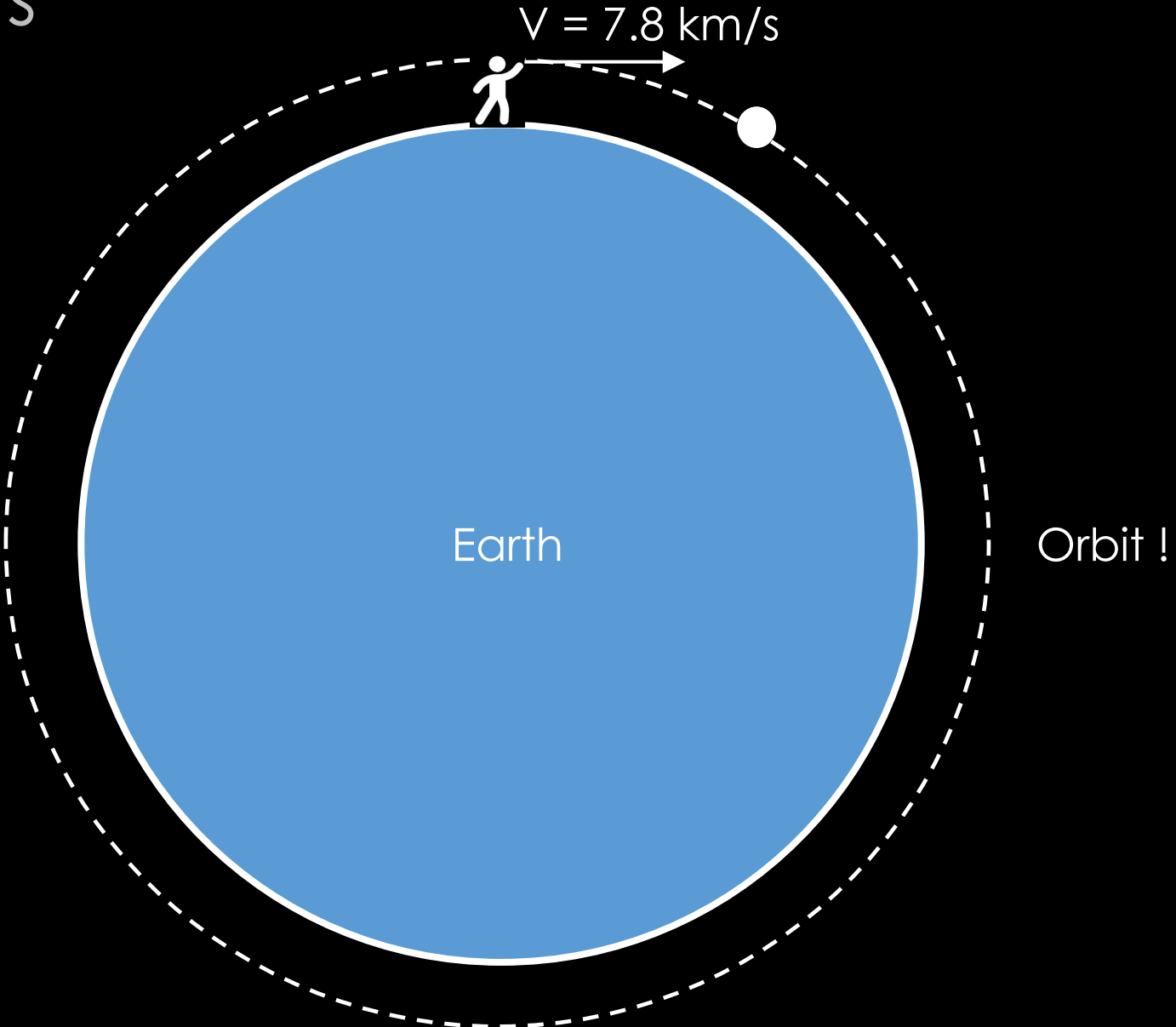
15 May 2026 – Sacramento, CA



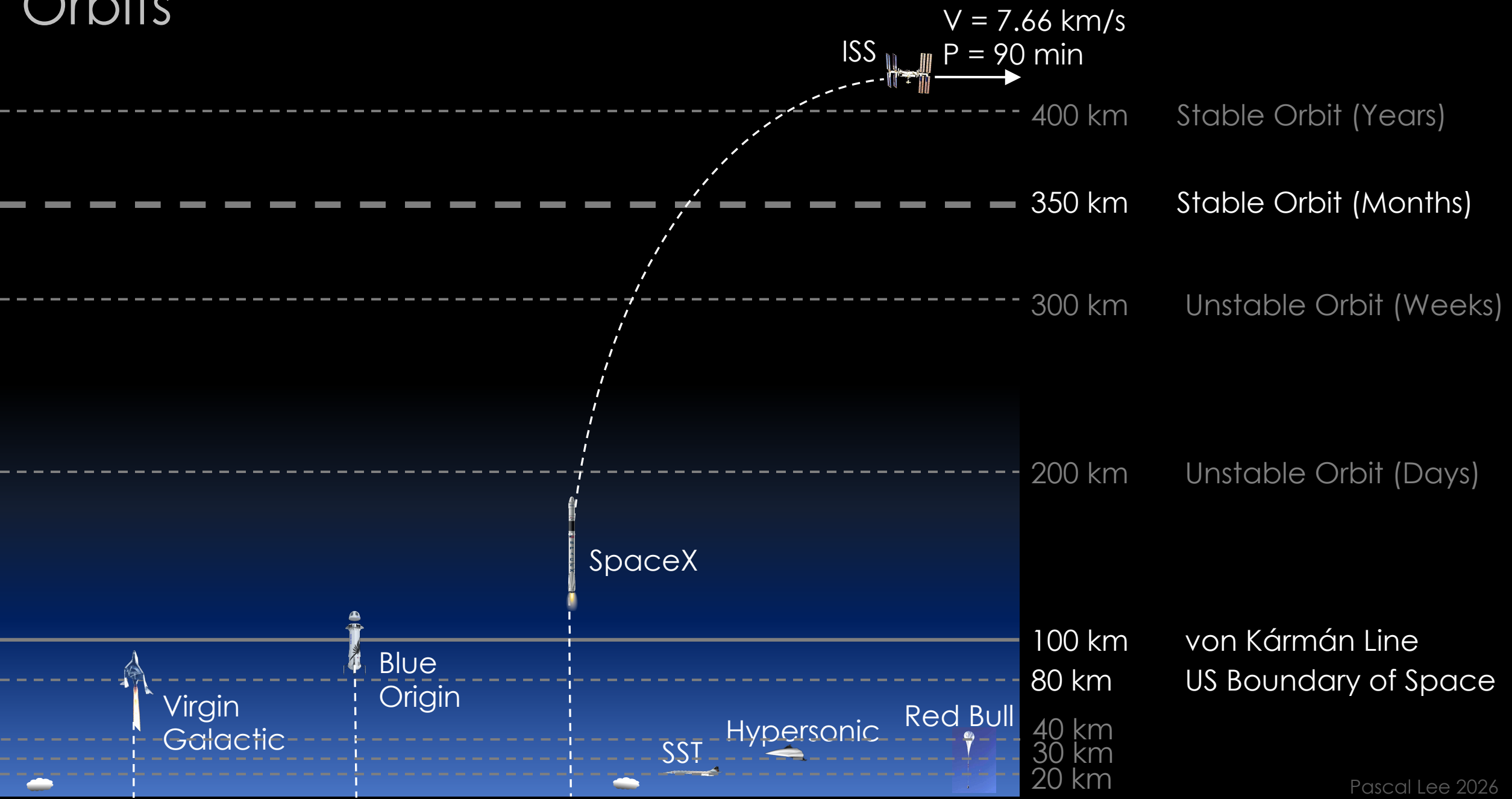
# Orbits



# Orbits



# Orbits



# Katherine Johnson

(1918-2020)

## NASA “Computer” & Scientist

1918: Born (Coleman) in White Sulphur Springs, WV. Youngest of 4.

1928: Enrolled in High School in Institute, WV. Excelled in math.

1933: Graduated HS at 14. Joined WV State University.

Schieffelin Claytor, 3<sup>rd</sup> AA to PhD in Math, mentored her.

1937: Graduated SCL w/ degrees in **Math and French**.

Math Teacher – Marion, VA

1939: Marries John Goble. 1<sup>st</sup> AA Grad student at WVU - Math

1953: “**Colored Computer**”, GNC, Computing Section, **NACA**

**1956: John Goble dies of brain tumor**

1958: Spacecraft Controls Branch, **NASA**. Name allowed on report.

1959: Marries Jim Johnson.

1961: Calculated trajectories & plotted nav charts for **Mercury** astron.

1962: **John Glenn** wanted her to check electronic computer numbers.

1969-: Worked on **Apollo 11, Apollo 13, Shuttle, & Humans to Mars**

### Honors

2015: **Presidential Medal of Freedom** (Obama)

2016/2017: **Hidden Figures** Book & Film (Taraji P. Henson as KJ)

2021: Katherine Johnson Middle School in **Sacramento, CA**



# Valentina Terechkova

Soviet Cosmonaut

First Woman in Space

1937: Born in Bolshoye Maslennikovo, 270 km NE of Moscow.

Father (tractor driver + tank sergeant in Army) killed when she was 2.

1953: Graduates from school at 16. Work in **tire factory, then textile mill.**

1959: **Skydiving** at local aeroclub. Trains as competitive parachutist.

1960: Graduates from Light Industry Technical School.

Joins local Komsomol (Communist Youth League) in Yaroslavl.

1962: **Selected to join first female cosmonaut corps.** Undergoes training.

Becomes junior lieutenant in the Air Force. Member, Communist Party.

1963: 21 May: Selected to pilot Vostok 6. **"Gagarin in a skirt"**. Lieutenant

16 June: **Vostok 6: First Woman in space.** 48 orbits. 2.9 d. Commander

Hero of the Soviet Union Medal + Order of Lenin (Khrushchev)

To this day: **Only woman to fly solo in space. Youngest woman in space.**

1960s: 42 trips abroad. Completes degree at Zhukovsky AF Engineering Acad.

1974-1989: Mbr Presidium of Supreme Soviet. Colonel, then Maj General in AF.

1977: **Doctorate in aeronautical engineering.**

Remains politically active after fall of Soviet Union (1991)

1995,2003: Loses 2 elections to Nat. State Duma. Wins in 2011, 2016 and 2021.

2022: Voted for Russian invasion of Ukraine. International sanctions.



# Sally K. Ride

(1951-2012)

NASA Astronaut

First American Woman in Space

1951: Born in Santa Monica, CA. Elder daughter of 2.

1960: Family travels in Europe for a year. Learns tennis in Spain. Alice Marble.

1968: Graduates Westlake School for Girls. Wants to become **Astrophysicist**.

Joins Swarthmore. **Eastern Intercollegiate Women's Singles Champ**.

1970: Joins UCLA to become tennis pro. Only woman physics major.

1972-73: Transfers to Stanford. **BS in Physics + BA in English Lit.** + Billie J King

1975-78: **MS in Physics. PhD in Astrophysics** (Xrays & interstellar medium)

1977-78: **Applies for NASA Astronaut**. Selected in Group 8: 35 incl. 6 women.

1979: Completes astronaut training. Discovers love for flying. Buys plane.

1983: STS-7 Challenger: Becomes **First American Woman in Space**: RMS

1984: STS-41G Challenger: **1st American Woman to Fly Twice** + KSullivan EVA

1986: Rogers Commission investigating Challenger Disaster.

1987: NASA HQ Ride Report: NASA Leadership & America's Future in Space.

1989: Professor of Physics, UCSD.

1990s-2000s: E/PO: Childrens Books, Sally Ride Science, Space.com

2003: Columbia Accident Investigation Board

2012: Dies of pancreatic cancer.

**Honors: Many**



# Christa McAuliffe

(1948-1986)

## American Teacher & Astronaut

1948: Born (Corrigan) in Boston, MA. Oldest of 5 children.

1970: **BA Education and History**, Framingham State College.

Marries Steven J. McAuliffe. Eventually: Two children: 9 & 6.

1971-78: Teaches history & civics at Thomas Johnson MS, Lanham, MD

1978: **MA Education Supervision & Admin.**, Bowie State U, MD

1978-1983: Teaches English & American History in NH (7<sup>th</sup>-9<sup>th</sup> grades)

1983: Teaches American History, Law & Economics, Concord HS, NH.

+ Self-designed course: **"The American Woman"**.

NYT: She *"emphasized the impact of ordinary people on history, saying they were as important to the historical record as kings, politicians or generals."*

1984: Reagan announces **Teacher In Space Project**. >11,000 applicants

1985: 114 semi-finalists (2 from NH) meet w/ review panel in DC.

10 finalists go to NASA JSC. Christa selected + B. Morgan backup.  
Training + Experiments prep + Lessons from space prep, incl.

*"Where We've Been, Where We're Going, Why"*. TV: *"If you're offered a seat on a rocket ship, don't ask what seat. Just get on."*

1986: Jan 28: **Challenger Disaster**. Legacy: *"I touch the future, I teach."*



# Judith Resnik

(1949-1986)

## NASA Astronaut

- 1949: Born in Akron, OH. Elder of 2 children. Father: Jewish from Ukraine
- 1963-66: Harvey S. Firestone HS. Excels in math, physics & piano. Valedict.
- 1966: SAT Perfect Score: Only woman that year & 16<sup>th</sup> woman in history.
- 1970: BS EE (1 of 3 women), Carnegie Mellon University.  
Marries Michael Oldak (EE), then divorced in 1975. Good terms.  
Design Engineer, Missile & Surface Radar Div., RCA (1970-1974)  
Develops circuitry & s/w for NAVY radars & NASA sounding rockets.
- 1971-77: ME+PhD EE, U. Maryland (Effects of electrical currents on retina)
- 1974: Biomed engineering, Lab for Neurophysiology, NIH
- 1977: Systems Engineer, Xerox Corp, L.A., CA. + Private Pilot
- 1978: Selected as NASA Ascan Group 8, 1 of 29 men & 6 women (>8k app.)  
Trains on T-38 Talon. Developed s/w for RMS, Tethered sats, Shuttle.  
Did not like PR, so was passed over by Sally Ride as 1<sup>st</sup> American WIS
- 1984: STS-41-D. 12<sup>th</sup> STS flight. *Discovery* maiden voyage.  
Resnik whispered to Mullane: "There are no maidens on this flight".  
Star astronaut in "*The Dream Is Alive*" (IMAX)
- 1986: Jan 28: STS-51-L: Challenger Disaster. She (or Onizuka) had presence of mind to turn on pilot Smith's PEAP during cabin fall to ocean.
- Legacy:** Harstfield (41-D Cdr) described her as the "astronaut's astronaut".



# Laurel Clark

(1961-2003)

NASA Astronaut, Medical Doctor, USN Captain

1961: Born (Salton) in Ames, IA

1979: Graduates William Horlick HS, Racine, WI

1983-87: BS Zoology, then Medical Doctor, U Wisconsin-Madison.

Active duty, Diving Medicine, US Navy Experimental Diving Unit

1987-88: Pediatrics, National Naval Medical Center

1989-96: Radiation Health Officer, Undersea Medical Officer, Diving Medical Officer, Submarine Medical Officer,

Naval Flight Surgeon: Marine Corps AV-8B Harrier Attack Squadron

Also Basic Life Support Instructor, Advanced Cardiac LS Provider,

Advanced Trauma Life Support Provider, Hyperbaric Chamber Adv.

Married **Jonathan Clark** (USN Captain & NASA Flt Surgeon). 1 son.

1996: Selected by NASA as Ascan.

1997-2000: NASA Astronaut Office Payloads/Habitability Branch

2003: **STS 107. Last flt of *Columbia*.** 15.9 days in orbit. 80 experiments, incl. Gardening in space.

2003: Feb 1: ***Columbia* Disaster** (during Re-Entry)



# Kalpana Chawla

(1962-2003)

NASA Astronaut

1961: Born in Karnal, Haryana, India. Has 2 sisters + 1 brother.  
Interested in space; father: "only guys want to do [that]"

1982: BEng. Aerospace Eng., Punjab Eng. College, Chandigarh  
Moved to America to study at U. of Texas at Arlington.

1983: Married J.-P. Harrison.

1984: MS Aerospace Engineering, U. of Texas at Arlington.  
Learns to fly gliders & planes. Becomes a CFI.

1988: PhD Aerospace Engineering CU Boulder  
Fluid dynamics engineer, NASA Ames Research Center

1990s: Becomes US Citizen

1993: Research Scientist & VP, Overset Methods, Los Altos, CA.  
Continued flying in Palo Alto + Learned Bharatanatyam in San Jose, CA

1994: Selected by NASA as Ascan. Trains at NASA JSC.

1995-2003: NASA Astronaut, EVA and robotics division, NASA Astronaut Corps.

1997: **STS 87**. Columbia. 15.7 days. **1st woman of Indian origin to go into space.**  
Operated RMS & conducted microgravity experiments.

2003: **STS 107**. Last flt of **Columbia**. 15.9 days in orbit. 80 experiments.

2003: Feb 1: **Columbia Disaster** (during Re-Entry)



# Mae C. Jemison

(b. 1956)

American Physician, NASA Astronaut

1956: Born in Decatur, AL. Youngest of 3 children.

Inspired by Nichelle Nichol's portrayal of Lt. Uhura (*Star Trek*) interested in natural sciences and dance.

1973: Graduates Morgan Park HS, Chicago, IL

1972: Enters Stanford (at age 16!)

1977: BS Chem. Eng + BA African Amer. Studies, Stanford University

1981: MD, Cornell Med School. Cuba, Thailand, Flying Docs, E. Africa.

1982: USC Medical Center, Los Angeles, CA

1983-85: Medical Officer, Peace Corps, Liberia, Sierra Leone. Also CDC

1987: Selected as Ascan by NASA. Group 12 Training.

1989: NASA Astronaut.

Assigned to STS-47 as Science Mission Spec.

1992: STS-47. 50<sup>th</sup> Shuttle mission. Spacelab Japan. 190.5h in space.

Began comms: "Hailing frequencies open" (*Star Trek*). Space Health experiments. Induced female frogs to ovulate, fertilize the eggs, and then see how tadpoles developed in zero G.

1993: Leaves NASA to start Jemison Group, Inc.

1995-2005: Prof. Env. Studies, Dartmouth; Prof-at-Large, Cornell U.

Global STEM E/PO. Books. **Honors:** Many.



# Peggy Whitson

(b. 1960)

American Astronaut

**Record Total Time in Space  
for American Astronauts**

695 d. 7h, 4 min

**Record Number of EVAs for  
Women Astronauts: 10**

- 1961: Born in Mount Ayr, IA. Has 1 sisters + 2 brothers.
- 1969: Decided to become an astronaut after watching moon landing
- 1981: BS Biology & Chemistry, Iowa Wesleyan College
- 1986: PhD Biochemistry, Rice University
- 1989: Marries Clarence F. Sams
- 1989-93: Research Biochemist, Biomedical Ops & Research Branch, NASA JSC  
Payload developer, Bone cell research experiment on STS-47.  
Member, US-USSR-Joint Working Group in Space Medicine
- 1992-95: Project Scientist, Shuttle-Mir Program
- 1996: Selected as NASA Ascan. Training at NASA JSC.
- 1998-1999: NASA Lead for Crew Test Support Team in Russia.
- 2002: **STS-111: Exped 5: STS-113: 6 mos on ISS.** RMS + 4.5h Orlan EVA. 184.4 d.
- 2003: Cdr, NEEMO 5 aboard Aquarius Underwater Laboratory
- 2007-2008: **Soyuz TMA-11: Exped 16: Soyuz TMA-11.** 8 g reentry. Log: 191.8 d.
- 2009-2012: **Chief of Astronaut Office.** 1<sup>st</sup> female, 1<sup>st</sup> non-pilot Chief Astronaut
- 2016-2017: **Soyuz MS-03: Exped 50/51/52: Soyuz MS-04.Cdr Exped 51.** 289.2d
- 2023: **Cdr, Axiom2. Crew Dragon Freedom.** 8d. 1<sup>st</sup> Female Cdr of Private Mission.
- 2025: **Cdr, Axiom 4. Crew Dragon Grace.**



# LIU Yang

(b. 1978)

## Chinese Astronaut (Taikonaut) First Chinese Woman in Space

1978: Born in Zhengzhou, Henan province, into “worker’s family”. Only child.  
Aspired to be a bus driver or a lawyer.

Father: Assistant engineer at Zhengzhou First Food Machinery Factory

Mother: Worker in Zhengzhou Light Automobile Manufacturing Factory.

1997: Joins PLA Air Force. Becomes pilot, flt unit deputy head, & major.  
Graduates PLA Air Force University.

1997-2010: **Military transport pilot**. Logs 1,680 h. Known for nerves of steel  
by landing plane, covered in blood, after multiple bird strike to engine.

2004: Marries Zhang Hua (PLAAF pilot). 1 son + 1 daughter.

2010: **Selected as Astronaut**, PLA Astronaut Corps (PLAAC), Group 2.

2012: **Shenzhou 9. First Chinese woman in space**. First crewed mission to  
first Chinese space station, **Tiangong 1**, w. Jing Haipeng & Liu Wang.  
Space medicine experiments.

2018: PhD, Sociology, Tsinghua University

2022: **Shenzhou 14**. 6-mo mission on **Tiangong 1**. 2<sup>nd</sup> woman to EVA (6h7m)

Now: Remains active astronaut. Rank: Senior Colonel. Might go to Moon...  
Described as “eloquent speaker, avid reader, and lover of cooking.”



# Jill Tarter

(b.1944)

## American Astronomer – SETI Pioneer

1944: Born (Cornell) in NYC, NY. 1956: Father passes away when she was 12.

1961: Graduates Eastchester HS. Discouraged to do engineering except dad.

1963: Marries Bruce Tarter

1965: BS, Engineering Physics, Cornell University. 1 woman/300 Eng College

1971: MS Astronomy, UC Berkeley.

1975: **PhD Astronomy, UC Berkeley.** Thesis: coins term *Brown Dwarf*.

B. Bowyer at Hat Creek: Project SERENDIP: *Search for Extraterrestrial Radio Emissions from Nearby Developed Intelligent Populations.*

1984: **Co-founds SETI Institute.** Leads SETI research for ~ 3 decades.

1980s: Marries William “Jack” Welch (1934–2024), Astronomer, UC Berkeley

1992-93: Project Scientist, **NASA High Resolution Microwave Survey**

1993-: Director, **Project Phoenix** (SETI Institute)

1997: Movie *Contact* based on C. Sagan novel stars Jodi Foster as Dr Eleanor “Ellie” Arroway, a character inspired by Jill Tarter.

2001-2007: Co-created SETI Institute’s Allen Telescope Array, Hat Creek, CA

2002: Co-creator w. M. Turnbull of *HabCat* (catalog of habitable exoplanets)

2012: Retires from SETI Institute.

2017: Bio by Sarah Scoles: *Making Contact: Jill Tarter and the Search for Extraterrestrial Intelligence*”

**Honors:** Many. Recognition for championing SETI and Science Education.



# Lindy Elkins-Tanton

American Planetary Scientist & Professor

ca 1965: Born and raised in Ithaca, NY.

1987: **BS Geology, MIT + MS Geochemistry, MIT**

1987-95: Business plan writer for high tech startups.

1995-97: Lecturer at St. Mary's College of Maryland

2002: **PhD Geology and Geophysics, MIT**

Research Scientist, Brown University

2006-2010: **Prof of Geology, MIT**

Leads 4 expeditions to Siberia. Established link betw Siberian Traps volcanism and Permo-Triassic Extinction, via role of coal burning.

2011: Director, Dept. Terrestrial Magnetism, **Carnegie Institution for Science**

2014: Director, School of Earth & Space Science, **Arizona State University**

VP Interplanetary Initiative, ASU

2016: Co-founds **Beagle Learning**. Leads higher education.

2017: **PI, NASA Psyche Mission** to metallic asteroid 16 Psyche. 2nd woman PI.

Launch: Oct 2023. Mars Flyby: 5/15/2026. ETA at 16 Psyche: Aug 2029.

2021: Member of the National Academy of Sciences

2022: Author, *A Portrait of the Scientist as a Young Woman* (William Morrow)

2024-2025: Co-Chair, *NAS Science Strategy for the Human Exploration of Mars*.

2025: **Director, Space Sciences Laboratory (est. 1959), UC Berkeley**

2026: Author, *Mission Ready: How to Build Teams that Perform under Pressure*

**Honors:** Many + Asteroid **(8252) Elkins-Tanton** + mineral **elkinstantonite**



# Deborah Kolyer

(b. 1960)

SETI Institute, Director, Grants Administration

- 1960: Born (Schwartz) in Brooklyn, NY. 2<sup>nd</sup> child of 3.
- 1978: Graduates Oceanside HS, Oceanside, NY (Long Island)
- 1980: Undergrad RA Marine Geology, SUNY Albany Geology Department  
Expedition to Galapagos Rift Zone via Panama on RV Lulu w/ Alvin deep diving sub. Research: black smokers, polymetallic nodules, hydrothermal vents on floor of E. Pacific Rise. Only female on ship!
- 1981: Intern at NOAA, Washington, DC.
- 1982: BS Geological Sciences, SUNY Albany
- 1985: MS Earth Sciences, UC Santa Cruz w/ NSF Grant.  
Expedition on RV Kana Keoki to Banda Sea, E. Indonesia to collect samples for tectonic history. Women below deck to avoid pirates!
- 1985: USGS Marine Geol Station. M. Carr intro to S. Squyres (**NASA ARC**)
- 1986-95: **Science at SETI Inst.** (b.1984) Support J.Tarter Coop. IRAS Survey, Rhea craters, biomarkers, AI, comp. models. **Asteroid 8803 Kolyer.**
- 1988: Married R. Kolyer. 2 daughters.
- 1995-Now: **Administrative Team, SETI Institute.** Supports >200 scientists.
- 2010-2018: Volunteer at Gorilla Foundation. Works with Koko (d.2018).
- 2021-2023: Fieldwork w/ L. Doyle (SETI): humpback whale comms, Alaska.
- Hobbies: 3 dogs, 2 cats, honeybees, gym, hiking, nature photography.



# Gwynne Shotwell

(b. 1963)

President & COO, SpaceX

1963: Born (Rowley) in Evanston, IL. #2/3 girls. Dad: Brain surgeon. Mom: Artist

1969: Found Apollo 11 Moon landing "boring".

1982: Graduates Libertyville HS. Excels in Academics & Athletics. Cheerleader

Inspired to become engineer after talk by eng. at Society of Women Engineers.

1986: BS Mechanical Engineering, Northwestern University

1986-88: Joined Management Training Program, **Chrysler Corporation**

1988: MS Applied Mathematics, Northwestern University

1988-98: **The Aerospace Corporation**, El Segundo, CA. Military space R&D & contracts, thermal analysis, space systems engineering, project management.

1998: **Dir, Space Systems Div, Microcosm, Inc.**, El Segundo, CA. ExCom, Business dev.

2002: Meets E. Musk. Convinces him full-time business dev needed. **Joins SpaceX.**

Successfully negotiates first **Crew Resupply Services** contract w/ NASA.

2008: **President, SpaceX.** Falcon launch manifest >50, incl. ISS resupply services: \$5B.

1<sup>st</sup> landing of an orbital rocket's first stage on land and on an ocean platform.

1<sup>st</sup> relaunch/landing of used orbital rocket. 1<sup>st</sup> re-flight of commercial cargo s/c.

1<sup>st</sup> controlled flyback and recovery of a payload fairing. Dev of Falcon 9 rocket.

2020s: SpaceX becomes 1<sup>st</sup> private company to launch astronauts (2) to Earth orbit + US gov & commercial (private) crewed flts, incl. Inspiration 4 & Polaris Dawn.

NASA Admin B. Nelson praises her "phenomenal" leadership. AIAA: >\$350k STEM ed.

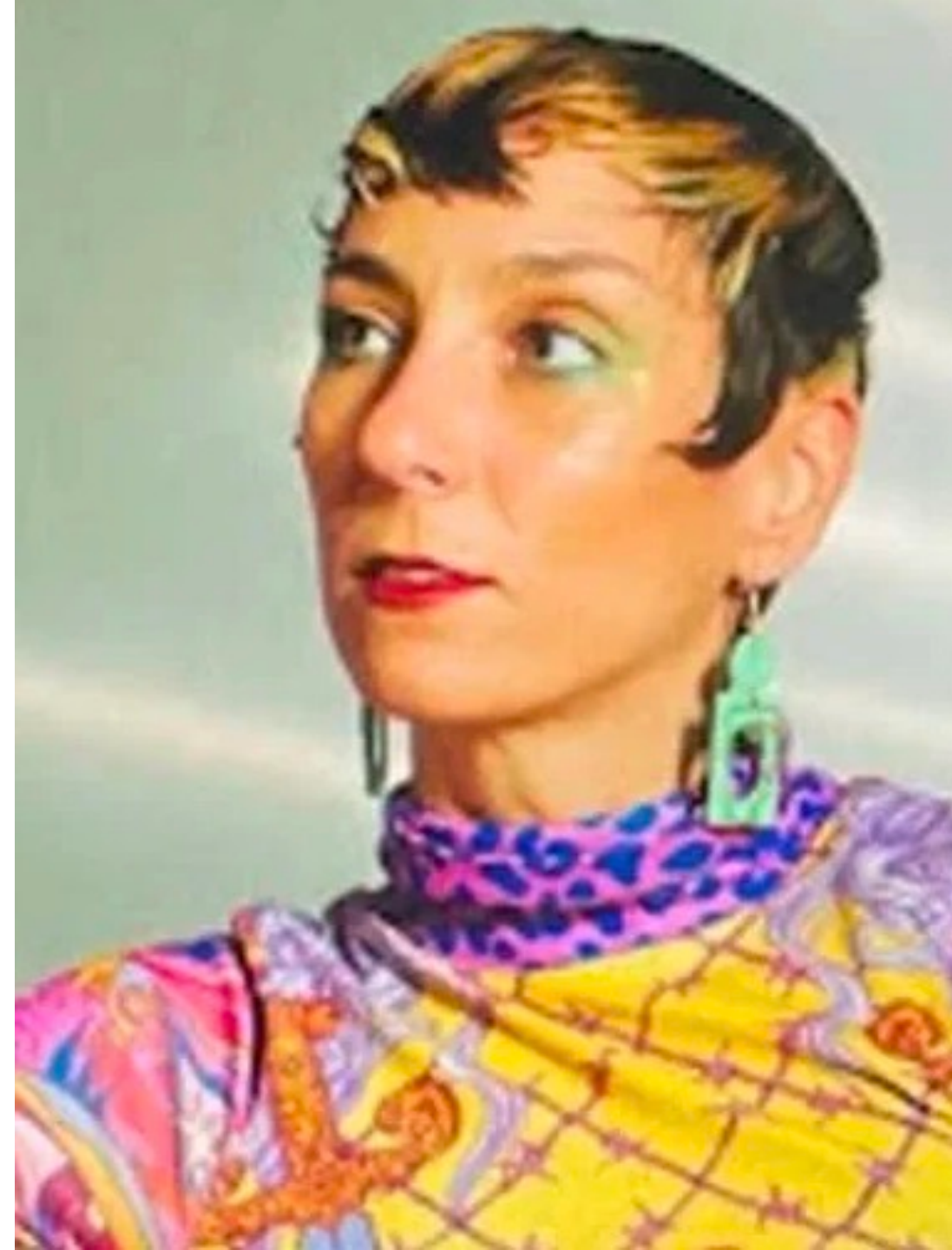


# Danica Vallone

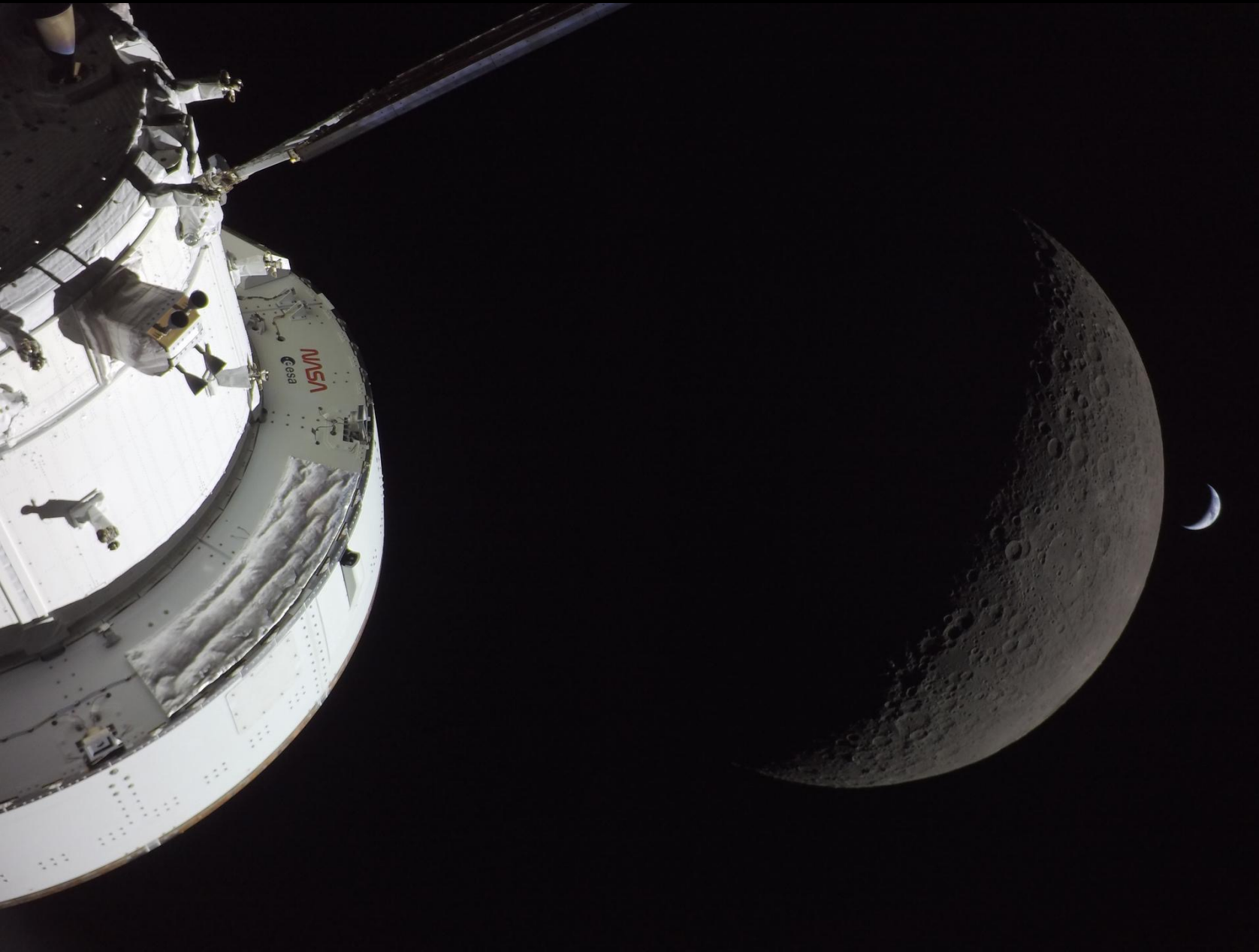
## American Space Designer & Advocate

- Based in Los Angeles, CA
- **Founder of Red Hen Industries**, design & fabrication firm specializing in film, commercial, large-scale installations. Clients & collaborators in Medtech and Aerospace, incl. Axiom, Paragon, Sierra, and Vast.
- **Creative Director for Global Effects**, largest, legacy provider of space-related costumes, props, and set pieces in the film industry.
- Member, **XPRIZE Brain Trust**, collaborating on Space and Education.
- Designer in Residence, **UCSD Design Lab**: Bionics & Human Resilience.
- Founding board member, **OSMED** – Organization for Space Medicine, Engineering, & Design, created to advance human space exploration across disciplines and company lines.
- Director of Development, **Haughton-Mars Project**, leading planetary analog field research project on Devon Island, High Arctic, supported by NASA, academia, industry, and non-profits.  
Participated in HMP-2024 field campaign, Arctic, testing new tech for universal basic healthcare in extreme & remote environments.
- Speaker at **TEDx Talks** on the project.
- Speaker at **UNOOSA** (UN Office of Outer Space Affairs)

Plans to spend remainder of career advocating for importance of humans in space past, present, and future.



# Artemis II



# Artemis II Crew



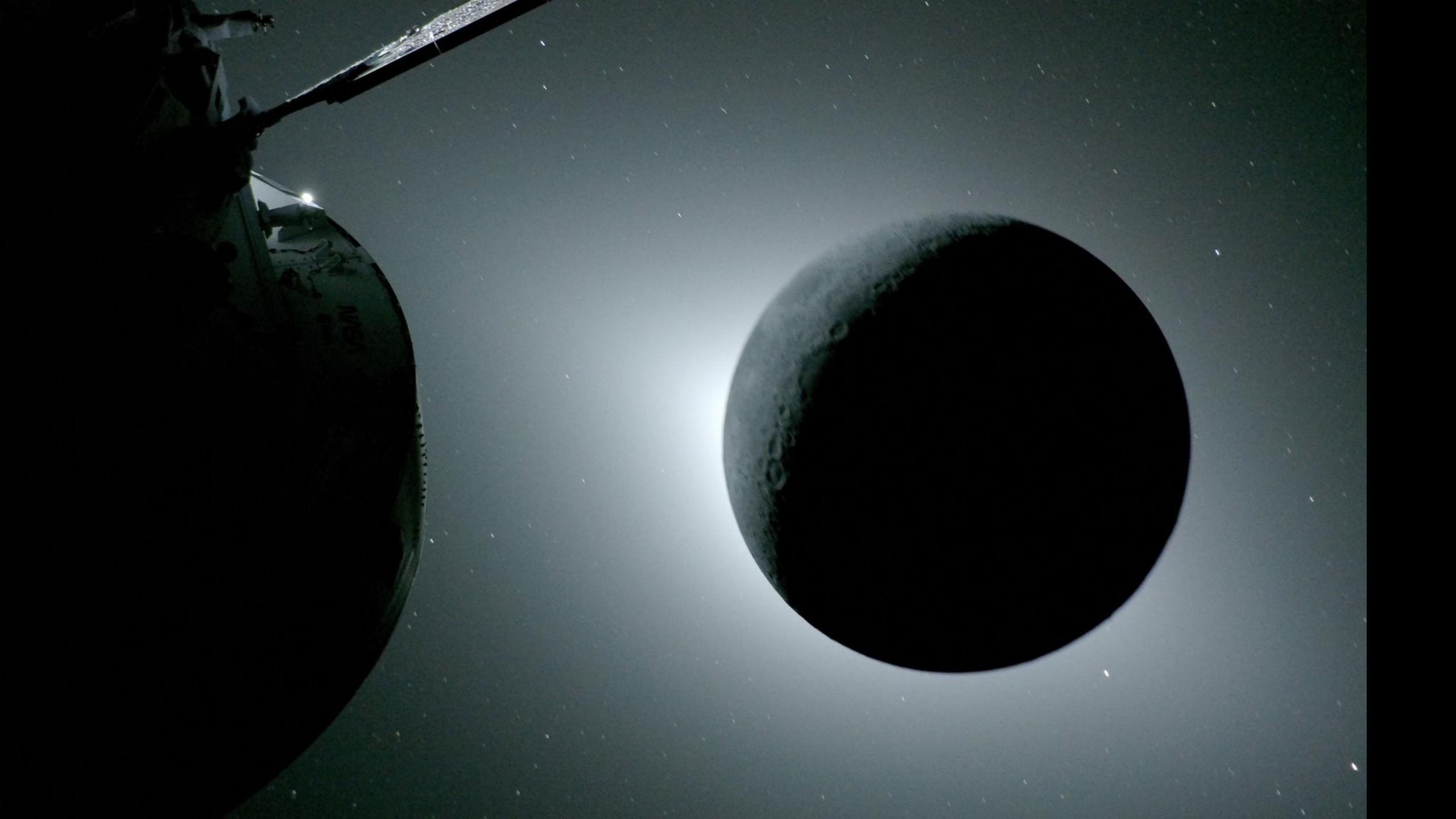
Victor Glover

Christina Koch

Jeremy Hansen

Reid Wiseman







# SCIENCE



Marie Henderson

Maria Banks

Ariel Deutsch

Ryan Watkins

Sara Schmidt



Kelsey Young

Angela Garcia





# Liliana Villarreal

## Artemis II Landing & Recovery Director NASA

Born in Cartagena, Colombia  
Moved to Florida, USA at age 10.

### Career

1996: BS Aerospace Engineering - Georgia Tech

1997: MS Aerospace Engineering - Georgia Tech

2002: Master's of Management of Technology - University of Miami

2003: Engineer - Boeing Company at KSC: Payloads for Shuttle & ISS

2007: Joins NASA: Orion, ICPS (Interim Cryogenic Propulsion Stage)

2021: Ops Flow Manager, Exploration Ground Systems: Orion, SLS

Now: Director, Artemis Landing & Recovery, EGS, NASA KSC: Artemis II

### Awards

2009, 2011: NASA JSC Group Achievement Awards

2013: NASA Exceptional Medal of Achievement

2014: NASA Group Achievement Award

2018: NASA Space Flight Awareness Team Award



# SPACE FOR US ALL

June 4-7, 2026

Hilton McLean Tysons Corner, McLean, Virginia  
In the Washington D.C. Metropolitan Area

[REGISTER HERE](#)[HOTEL RESERVATIONS](#)

*National Space Society's 44th Annual:*

INTERNATIONAL SPACE DEVELOPMENT CONFERENCE (ISDC) 2026

# My Interns (I)



**Wynnie Avent II**

SETI Institute REU: Discovered Lunar Caves  
BS, Geosciences, Virginia Tech  
MS, Planetary Geology, Wesleyan: Venus  
University of Connecticut  
Outreach & community engagement



**Rachel Long**

MI Intern: Pressur. rovers Moon/Mars  
BS, Aerospace & Mech Eng, UC Davis  
Grad School:  
Pilot; Mentor, Experimental Aircraft  
Assoc.; UC Davis Liquid Rocketry Club



**Erin Sampson**

MI Intern: Geology of Clavius, Moon  
Junior, CU Boulder, Astrophysical &  
Planetary Sciences.  
Enjoys reading non-fiction book on  
science and history.

# My Interns (II)



**Abby Mackey**

SETI Inst. NSF Intern: Caves on Mars.  
BS, Planetary Sciences, Purdue Univ.  
Highest Distinction, Purdue College of  
Science. All-American Marching Band  
for 3 seasons, incl. at Indy 500 Race.



**Scarlett Hartzman**

MI Internship: Rover Traverses on Mars  
Senior, New Rochelle HS, NY  
2025 Grand Prize, Westchester Sci Eng Fair.  
New Amer. Scholarship, ISEF. Cello, Crochet  
College: Carnegie Mellon Univ, Mech Eng.



**Ela Sen**

MI Internship: Rover Traverses on Mars  
Senior, Brooklyn Technical HS, NY  
Pres., Rocketry Club. AR Challenge Nat.  
VP, Aerospace Club. Outreach, Volunteer  
College: MIT, Aeronautics & Astronautics

Follow Your Dreams